

# AURORA MOBILE STORAGE SYSTEMS



**AURORA**

A SOLUTION FOR EVERY STORY



## Aurora Mobile stores every imaginable item in space efficient moving carriages.

Today's storage systems demand better use of space, increased flexibility, and adaptability for future growth.

An Aurora Mobile System can handle books, binders, boxes, athletic equipment, retail goods and more in 50% of the space.

## Applications

- Files and Documents
- Binders
- Office Supplies
- Library Books, Periodicals, DVDs
- Athletic Equipment and Uniforms
- Garments
- Weapons and Gear Bags
- Small Parts and Inventory
- Pharmaceuticals and Prescription Fulfillment Bags

## Markets

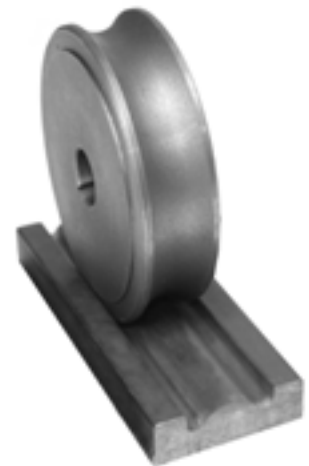
- Healthcare
- Pharmacy
- K-12 and Higher Education
- Library
- Retail
- Athletic
- Museums
- Manufacturing
- Government
- Military
- Law Enforcement
- Insurance
- Corporate

## Aurora Mobile Features

### Unique Rail Guidance System

Aurora's exclusive mobile guidance system provides straight tracking carriage movement with no play between rail and wheel.

- Patented Concave Wheel/Convex Rail Design.
- Even heavily loaded carriages move smoothly and securely.



### Exclusive Rail Design

A barrier free rail makes the mobile system accessible and eliminates tripping hazards. Mail or supply carts are no problem as they roll easily over the rail.



### Perfectly Aligned Rail

Dual pins ensure perfect alignment where rail is joined together, eliminating movement in any direction.

# Safety Features

## Mechanical Assist Models

- Premium Aisle Safety Lock prevents carriage movement when locked.
- Optional Mechanical Safety Sweep\* stops carriage movement by a quick tap of the foot.  
\*Available on 1000 Series Only.



Aisle Safety Lock



Safety Sweep

## Powered Mobile

### Passive Aisle Block

This safety feature protects people and objects in an aisle. Passive Aisle Block requires the user to return to the open aisle keypad before opening a new aisle, ensuring the safety of other users.

### Waist High, Carriage, or Aisle Entry Safety

Infrared safety options that stop carriage movement when beam is broken.

### Master Control Panel

Programmable Master Control Panel is feature laden.

- No computer interface required
- PIN Code Access for multiple users
- Selective Security with Aisle Lockout
- Fire and Night Park
- Program carriage speed and stopping distance
- On screen help menu
- Convert mobile carriages into fixed



Three safety options for extra protection

Waist High Safety

Carriage Safety

Aisle Entry Safety

## End Panel Options

- Wood
- Steel
- Chain Box Cover
- Self-Edge Laminate
- Laminate with Composite Edge





# THE MANY OPTIONS OF AURORA



## **Aurora Mechanical Assist Mobile**

---

Mechanical assist gearing enables smooth and effortless movement of even heavily loaded carriages. Special gearing allows for fewer handle turns for faster retrieval. Available in 1000 Series and Low Profile carriage heights.



## **Aurora Condensity**

---

Developed for high density top tab hanging files in drawers and general storage, Condensity saves investment, real estate and installation costs. Available in either mechanical assist or powered versions.



## **Aurora Powered Mobile**

---

The intelligent choice for high powered storage applications with plug and play operation, selective security - the ultimate in safety. Available in 1000 Series and Low Profile carriage heights.



## **Aurora Side-to-Side**

---

Imagine two or three rows of storage at your fingertips. By moving the front row left or right you have access to the back row. This modular lateral mobile is a simple and versatile system that can grow with your business.



## **Aurora Manual Mobile**

---

An economical, dependable system for any type of storage. Carriages up to 8' in length.



## **Mobile with Museum Cabinets**

---

Aurora Museum Cabinets can be added to mobile carriages and incorporated as part of a larger mobile system to save space.

# Aurora Mobile Systems Comparison

	CONDENSITY™	LOW PROFILE™	1000 SERIES™	SIDE-TO-SIDE™
				
<b>Application</b>	Small to large systems best suited for high density hanging files and general storage	Mid- to large systems: filing, general storage, library, athletic equipment, evidence, weapons, retail, and pharmacy	Mid- to large systems: filing, general storage, library, athletic equipment, evidence, weapons, retail, and pharmacy	Compact systems for filing, general storage, library, retail, and weapons
<b>Shelving Heights</b>	50 <sup>3</sup> / <sub>8</sub> ", 60 <sup>7</sup> / <sub>8</sub> ", 66 <sup>1</sup> / <sub>8</sub> ", 71 <sup>3</sup> / <sub>8</sub> ", 76 <sup>5</sup> / <sub>8</sub> ", 82", 89", 92 <sup>1</sup> / <sub>2</sub> "	64 <sup>1</sup> / <sub>4</sub> ", 76 <sup>1</sup> / <sub>4</sub> ", 85 <sup>1</sup> / <sub>4</sub> ", 88 <sup>1</sup> / <sub>4</sub> ", 97 <sup>1</sup> / <sub>4</sub> ", 100 <sup>1</sup> / <sub>4</sub> ", 121 <sup>1</sup> / <sub>4</sub> "	64 <sup>1</sup> / <sub>4</sub> ", 76 <sup>1</sup> / <sub>4</sub> ", 85 <sup>1</sup> / <sub>4</sub> ", 88 <sup>1</sup> / <sub>4</sub> ", 97 <sup>1</sup> / <sub>4</sub> ", 100 <sup>1</sup> / <sub>4</sub> ", 121 <sup>1</sup> / <sub>4</sub> "	64 <sup>1</sup> / <sub>4</sub> ", 76 <sup>1</sup> / <sub>4</sub> ", 85 <sup>1</sup> / <sub>4</sub> ", 88 <sup>1</sup> / <sub>4</sub> ", 97 <sup>1</sup> / <sub>4</sub> ", 100 <sup>1</sup> / <sub>4</sub> ", 121 <sup>1</sup> / <sub>4</sub> "
<b>Carriage Heights</b>	3 <sup>15</sup> / <sub>16</sub> " H or 5 <sup>15</sup> / <sub>16</sub> " H	3 <sup>15</sup> / <sub>16</sub> " H	5 <sup>15</sup> / <sub>16</sub> " H	1 <sup>1</sup> / <sub>2</sub> " H
<b>Capacity per Carriage Foot (in length)</b>	Low Profile: 750 lbs 1000 Series: 1000 lbs	750 lbs	1000 lbs	Designed to meet the maximum shelf unit load capacity
<b>Carriage Lengths</b>	Low Profile Letter: 4'2" - 22'11" Low Profile Legal: 5'2" - 23'3" 1000 Series Letter: 4'2" - 50' 1000 Series Legal: 5'2" - 49'1"	3' - 24'	3' - 51'	Maximum system not to exceed a run of 7 in the stationary row
<b>Carriage Depths</b>	25" or 31"	12" - 60"	15" - 60"	24", 30", 36", 42" and 48" widths in 9", 12", 13", 15", and 18" depths
<b>Operation</b>	Hand Push Mechanical Assist Handles Powered Keypad	Hand Push Mechanical Assist Handles Powered Keypad	Hand Push Mechanical Assist Handles Powered Keypad	Manually slide to either side
<b>Lock Options</b>	N/A	Carriage Mount Lock and Waist High Key Lock Powered Lock	Carriage Mount Lock and Waist High Key Lock Powered Lock	Carriage Mount Lock Optional Locking Door Accessories Available
<b>Optional Accessories</b>	Top Tab Hanging File Frames Reference Shelves Wardrobe Tower Security and Media Drawers	Filing and Storage Drawers Reference Shelves Retractable Doors Quik-Roll and Quik-Door Weapons Racks End-Stor Bin Dividers	Filing and Storage Drawers Reference Shelves Retractable Doors Quik-Roll and Quik-Door Weapons Racks End-Stor Bin Dividers	Sliding Doors Back Static Row Quik-Roll and Quik-Doors for Front Row Most shelving accessories
<b>Safety Options</b>	Aisle Safety Lock Handle Mechanical Safety Sweep Aisle Entry, Waist High, or Carriage Level Safety	Aisle Safety Lock Handle Aisle Entry, Waist High, or Carriage Level Safety	Aisle Safety Lock Handle Aisle Entry, Waist High, or Carriage Level Safety	Overhead Anti-Tip and Wall Ties to anchor to the wall

## Space Planning

Ordinary lateral files just won't do the job when you have so much more to store than files. An Aurora Mobile system can handle books, binders, boxes, and loads of other stuff in half the space... or use that extra space to store 50% more.

**Imagine cutting your storage by 50% or more with Aurora Mobile.**





# Accessories and Options

Our wide range of accessories can expand your options to meet your every need. These accessories include:

- Standard or Library Shelving
- Reference Shelves
- Magazine Doors
- Filing and Divided Drawers
- Single and Dual System Locks
- End-Stor, Quick Access Storage
- Weapons Racks
- Multiple Ramp/Rail Options including Seismic
- Browser Boxes
- Multiple Door Options
- File Dividers
- Bin Dividers
- Aisle Labels
- Sample and Game Brackets
- Garment Racks



**Quik-Roll Doors**



**Bins**



**Weapons Racks**



**Aisle Labels**



**Quik-Doors**



**Game Brackets**



**Twin Ramp**



**Threshold Ramp**



**Reference Shelves**



**Garment Racks**



**Browser Boxes**



**Filing Drawers**

*(Shown with optional Electric Keypad Lock)*



**Drawers**

# Applications



Box Storage



Athletic Storage



High Density Filing



Law Enforcement



End-Stor™ for quick access applications such as pharmacies.



Shared Departmental Storage with Hanging Files



Aurora Storage Products, Inc.  
600 South Lake Street • Aurora, IL 60506  
Ph: 630-897-6951 • Fax: 630-897-6994  
Toll Free: 800-277-1699  
[www.aurorastorage.com](http://www.aurorastorage.com)  
All Rights Reserved Copyright © 2019  
AMS102019

 **Contract Holder**  
Contract GS-25F-0084M  
U.S. Small Business Enterprise



For more information go to:  
<http://www.aurorastorage.com/>

For design assistance:  
[designsupport@aurorastorage.com](mailto:designsupport@aurorastorage.com)