

STAC-U-RAK™

RACK SUPPORTED STACKING SYSTEM WITH INTEGRAL CRANE

RIDG-U-RAK®



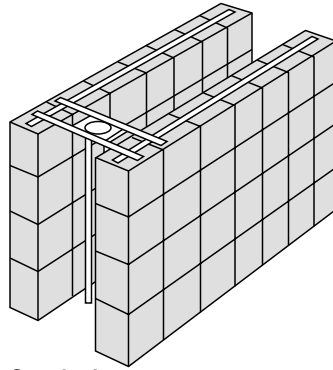
**Protects
valuable tools,
dies, fixtures.
Protects components,
subassemblies,
work-in-progress.**

MANUAL 32 R3

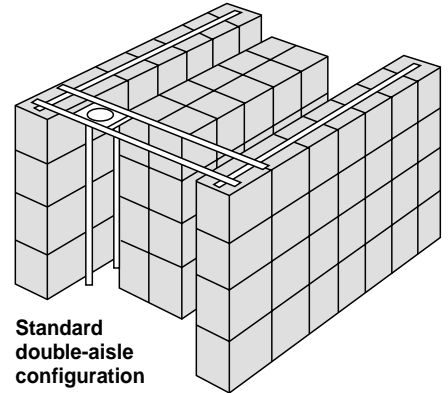
STAC-U-RAK™

Here's what the Stac-U-Rak System can do for you:

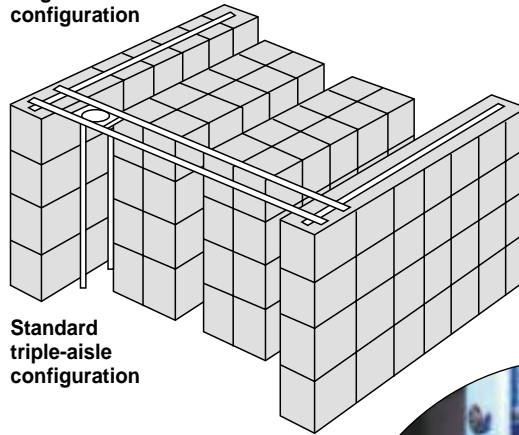
- Efficient use of valuable floor space.
- Provides high density at key locations throughout plant.
- 100% immediate accessibility saves time.
- Better location and organization of component parts.
- Keeps work-in-progress areas cleaner and safer.
- Saves space — custom tailors location opening to load size.
- Standard rack heights available up to 16' in 4" increments.
- Motorized systems up to 25' high.
- Simplifies handling of heavy items — simplifies transfers too.
- Fast storage and retrieval — ends long waits for lift trucks.
- Video camera pallet alignment (optional).
- Single, double and triple aisle systems.
- All motions can be motorized.



Standard single-aisle configuration

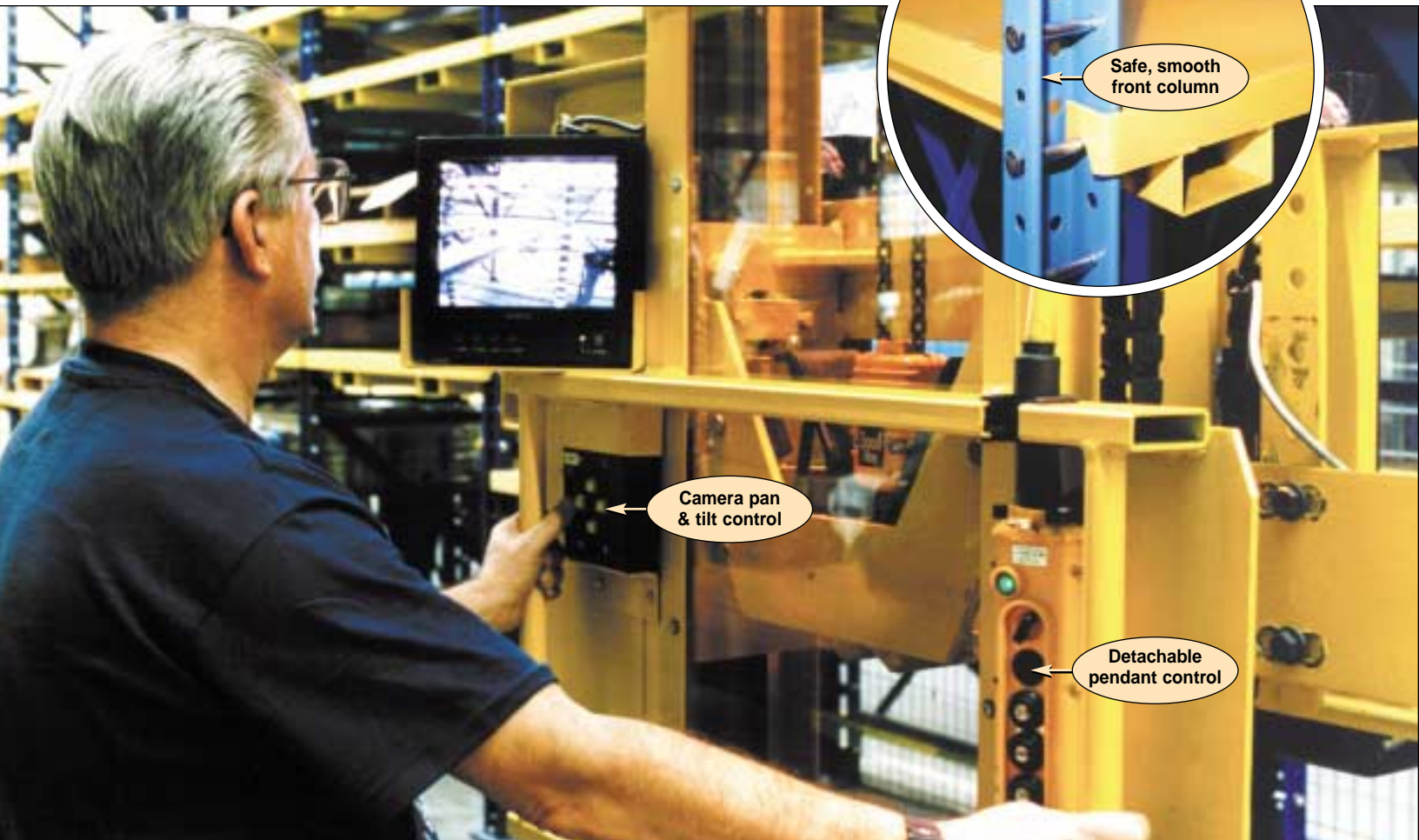


Standard double-aisle configuration



Standard triple-aisle configuration

Pallets feature foolproof engagement design, full depth fork entry pockets and rigid bracing.



Safe, smooth front column

Camera pan & tilt control

Detachable pendant control



RIDG-U-RAK®

Here's why Stac-U-Rak is the best system you can buy:

Better Structure

Unmatched structural integrity — heavy bracing on sides, back and top for greater rigidity and smooth operation.

Better Stacker

Standard 2000 lb. all manual stacker crane is designed with a 3 to 1 safety factor. The motorized 2000, 4000 and heavy duty 6000 lb. systems all comply with the Crane Manufacturers' Association of America (CMAA). Designed with the operator in mind, the stacker mast moves smoothly under manual or motorized control rotating 360° continuously.

Standard safety features include:

1. Free fall prevention device
2. Protective operators canopy
3. A protective shield that provides high visibility

Better Pallets

Foolproof pallet engagement — tongues at rear of pallet register in column slots before hooks at front of pallet can be engaged. Full depth fork entry pockets on pallets prevent accidental pallet tip-over. Pallets are rigidly braced for extra strength and have solid steel decks.

Better Overall System

Superior design, materials and construction give you a stacker system of outstanding value, providing you with many years of rugged, trouble-free operation.



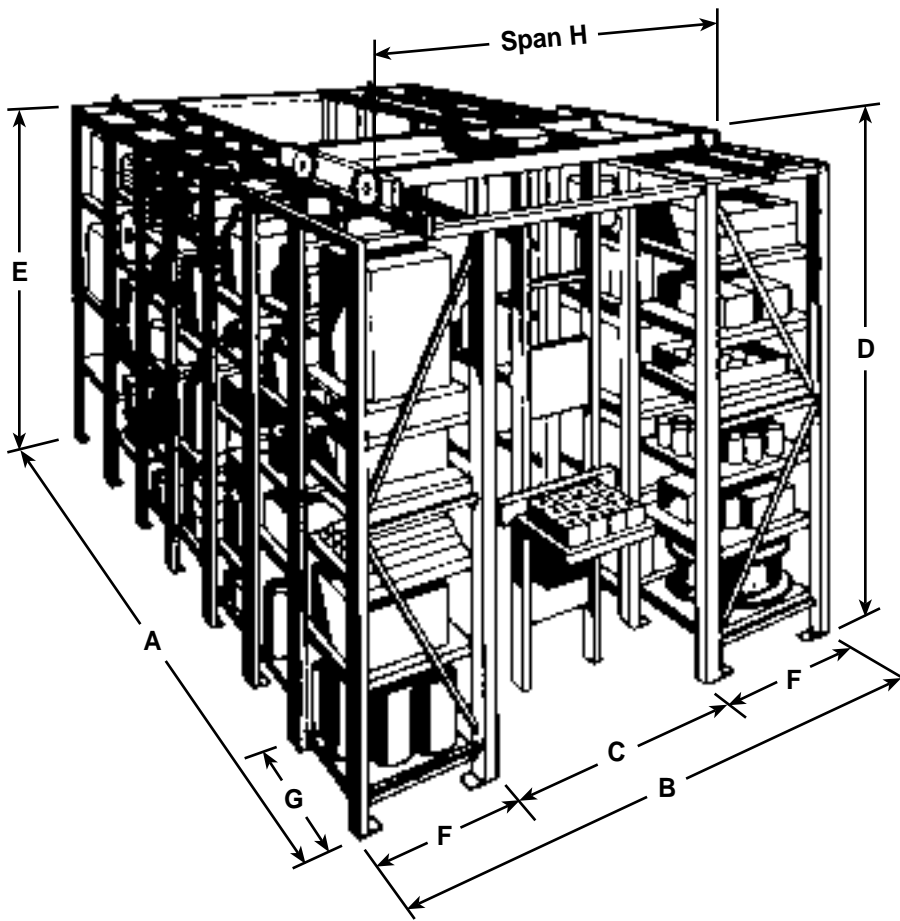
Superior materials and bracing make Stac-U-Rak rigid and secure.



Economical high-density storage with 100% accessibility.



Optional cantilevered run-outs are available to simplify transfers.



Optional tub kits customize pallets for specific storage needs. All Stac-U-Rak captive pallets feature full depth fork entry pockets.

Stac-U-Rak Dimensions*	Standard Pallet Sizes WxD	A Overall Length	B Overall Width	C Aisle Width	D Overall Height	E Rack Height	F Rack Depth	G Bay Ctrline	H Bridge Span
Standard 7 bay system – each side	26½" x 30"	18'-11 ⁵ / ₈ "	12'-0"	6'-8"	15'-3½"	13'-0½"	32"	31½"	10'-0"
	36" x 30"	24'-6 ¹ / ₈ "	12'-0"	6'-8"	15'-3½"	13'-0½"	32"	41"	10'-0"
	36" x 36"	24'-6 ¹ / ₈ "	13'-10"	7'-6"	15'-3½"	13'-0½"	38"	41"	11'-10"
	42" x 36"	28'-0 ¹ / ₈ "	13'-10"	7'-6"	15'-3½"	13'-0½"	38"	47"	11'-10"
	42" x 42"	28'-0 ¹ / ₈ "	15'-6"	8'-2"	15'-3½"	13'-0½"	44"	47"	13'-6"
	52" x 42"	33'-10 ¹ / ₈ "	15'-6"	8'-2"	15'-3½"	13'-0½"	44"	57"	13'-6"
* Dimensions shown are for manual systems only and are based on standard system of 7 bays on each side of aisle. Rack height "E" can be adjusted in 4" increments up to 16'-0½". Motorized systems can be much higher. Consult factory.	60" x 42"	38'-6 ¹ / ₈ "	16'-0"	8'-8"	15'-3½"	13'-0½"	44"	65"	14'-0"
	72" x 42"	45'-6 ¹ / ₈ "	16'-0"	8'-8"	15'-3½"	13'-0½"	44"	77"	14'-0"

Call today for more information:

Phone: 814-725-8751

Fax: 814-725-5659

www.ridgurak.com



Famous for integrity for over 50 years